



▶ Roller Conveyors

Lineshaft



Lineshaft conveyor is one of the more traditional types of roller conveyor, known for being versatile, cost effective with a reliable/robust operation. Lineshaft systems have multiple ancillary modules, a lot of which are driven from the single lineshaft. Optional modules include transfers, blade stops, lift up gates etc.

How It Works:

Beneath the rollers runs a lineshaft powered from a single motor gearbox, the lineshaft has multiple drive bands linked via spools up to each roller.

Ø50mm Driving rollers



Configurations:

- ▶ Straight track
- ▶ Bends
- ▶ Mobile sections
- ▶ Mitre sections
- ▶ Merge units

Find out more
on our website



Technical Information:

Model	Drive Capacity Per Roller	Roller Diameter	Roller Pitch**	Standard Track Widths	Standard Speeds (metres per minute)
XU30 XU30S Light Duty	4kg (3mm diameter belt)	35mm	37.5mm	412mm	30M / Min 16 / 21 / 26 / 30 as nominal Max Overall
				462mm	
				512mm	
				612mm	
				762mm	
XU60 Medium Duty	8kg (4.75mm diameter belt)	50mm	75mm 100mm 150mm	412mm	16 / 21 / 26 / 30 as nominal
				462mm	
				512mm	
				612mm	
				762mm	
XU90 Heavy Duty	12kg (5.3mm diameter belt)	50mm	75mm 100mm 150mm	412mm	16 / 21 / 26 / 30 as nominal
				462mm	
				512mm	
				612mm	
				762mm	
				912mm	

Hardware Key Features & Benefits:

▶ Modular design

Proven Performance: Built on a trusted foundation for consistent results.

Highly Configurable: Adaptable to meet diverse requirements with ease.

Low Maintenance: Simplified setup reduces time and cost, while minimal upkeep ensures long-term efficiency.

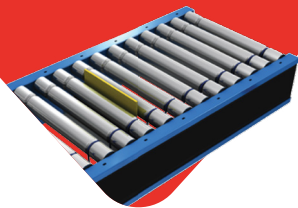
Flexible Design: Enables multiple configurations using standard components for maximum adaptability.

▶ Steel, zinc plated rollers

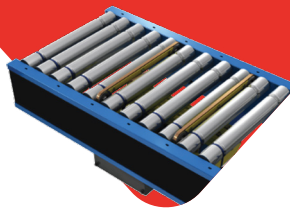
Surface protection ensures longevity.

Ancillary Items:

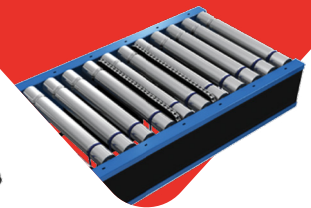
Vertical Blade Stop



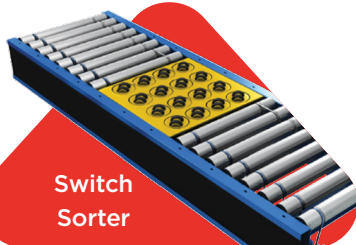
Belt Transfer Unit



Chain Transfer Unit



Switch
Sorter



Lift Up
Gate

