



▶ Roller Conveyors

Motorised Roller



Motorised roller conveyor which is also commonly known as ZLP (zero line pressure) or ZPA (zero pressure accumulation) conveyor is a technologically superior over lineshaft as each zone is digitally controlled using drive cards and PEC sensors. The system functionality only allows one product in each zone at once, meaning products will never touch, even when accumulating.

Motorised roller conveyors are ideal for diverse, delicate and high value products or packaging. It can also be used on a wide range of temperatures from -30 to +40°C.

How it works:

Small high-powered motors within conveyor rollers are linked to multiple slave rollers within a zone using small bands or toothed belts to transmit power between. The motorised roller is controlled using drive cards and PEC sensors linked to a PLC.

Technical Specifications:

- ▶ Roller Diameter: 50mm
- ▶ Roller Pitches: 75mm, 100mm, 150mm
- ▶ Inside Track widths: 412mm, 462mm, 512mm, 612mm, 762, 912mm
- ▶ Standard Speeds: Up to 90m/min

Configurations:

- ▶ Straight track
- ▶ Bends
- ▶ Mitre sections
- ▶ Merge units
- ▶ Divert Units

Key Benefits:

- ▶ **Modular design**
Allows for future expansion or reconfiguration.
- ▶ **Quiet**
Reduced noise is more conducive to good working environment.
- ▶ **Accumulation**
Non-contact accumulation thus eliminating product damage.
- ▶ **Low Maintenance**
Key parts are quick to change over.
- ▶ **Common uses**
Warehouses, assembly lines, packaging areas, and loading docks, or accumulation.



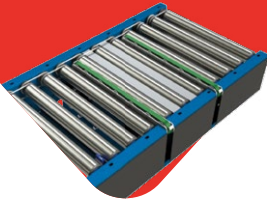
Find out more on our website



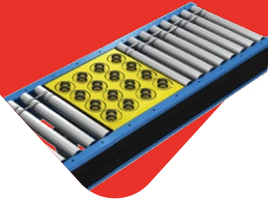


Ancillary Items:

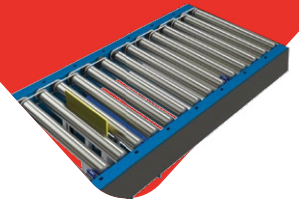
CU Belt Transfer



CU Switch Sorter



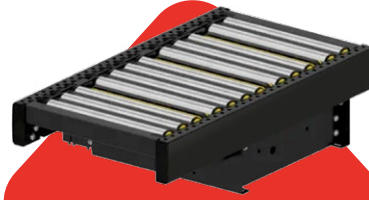
CU Vertical Bladestop



Interroll HPD Switch Sorter



Interroll belt transfer



Jan 2026 VI



CSL Automation
 3 Highwall Business Park, Tetron Way,
 Swadlincote, Derbyshire, DE11 0AF
 +44 (0)1283 55 22 55
 sales@cslautomation.co.uk

